



GMT MONTHLY MEMBERSHIP PROGRESS REPORT

Results as of: 5/31/2018

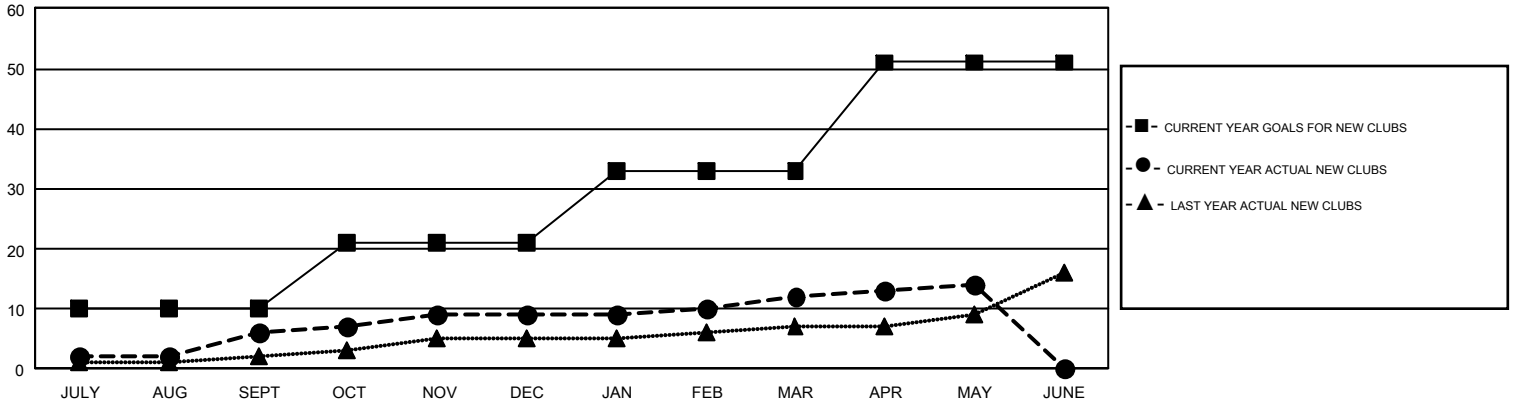
GMT Constitutional Area 1, Group B

GMT: CINDY GREGG

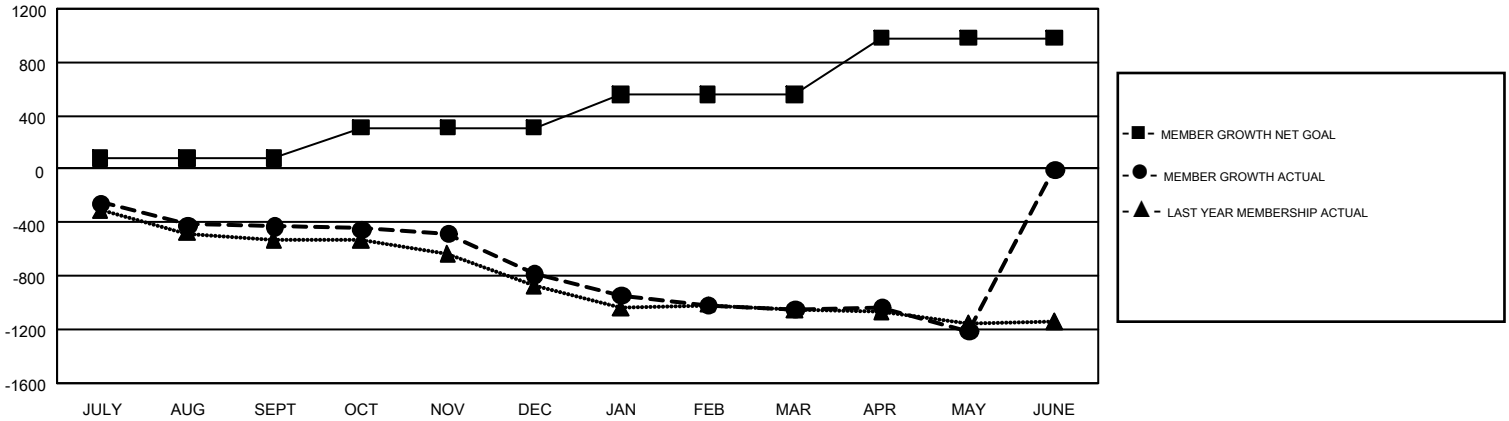
REPORT DOES NOT INCLUDE CLUBS IN UNDISTRICTED AREAS.

Clubs				Members			
RESULTS FOR 2017-2018				RESULTS FOR 2017-2018			
QUARTER	NEW CLUB GOAL	NEW CLUBS	DROPPED CLUBS	QUARTER	MEMBER GROWTH NET GOAL	MEMBER GROWTH ACTUAL	DROPPED MEMBERS ACTUAL (including transfers)
JULY/AUG/SEPT	10	6	5	JULY/AUG/SEPT	81	993	1,289
OCT/NOV/DEC	11	3	11	OCT/NOV/DEC	228	928	1,216
JAN/FEB/MAR	12	3	7	JAN/FEB/MAR	249	859	1,055
APR/MAY/JUNE	18	2	1	APR/MAY/JUNE	423	638	724

GOALS AND ACTUAL NEW CLUBS CUMULATIVE



GOALS AND ACTUAL MEMBERS CUMULATIVE



DROPPED CLUBS: 24	862 CLUBS OF 1,555 ADDED 1 OR MORE NEW MEMBERS	GENDER DISTRIBUTION MALE 29,638 (71.82%) FEMALE 11,631 (28.18%)
DROPPED MEMBERS DECEASED 743 CLUB CANCELLED 125 OTHER 3,415 <hr/> TOTAL 4,283	CLICK HERE FOR CUMULATIVE MEMBERSHIP DATA	TOTAL FAMILY UNIT MEMBERS 7,963 FAMILY MEMBERS PAYING HALF DUES 4,081